

# Annual Membership Rates

## Member Categories      Rates

Artisans / Trappers	\$100
Small Fishers	\$100
*Youth Entrepreneurs	\$300
**New Business Start-ups	\$300
1-5 F/T Employees	\$500
6-15 F/T Employees	\$750
16-20F/T Employees	\$850
21+ Employees	\$1,000

\*Youth Entrepreneurs - under 30

\*\*New Businesses - operational 24 months or less

Membership rates are subject to all applicable taxes

## Get in Touch

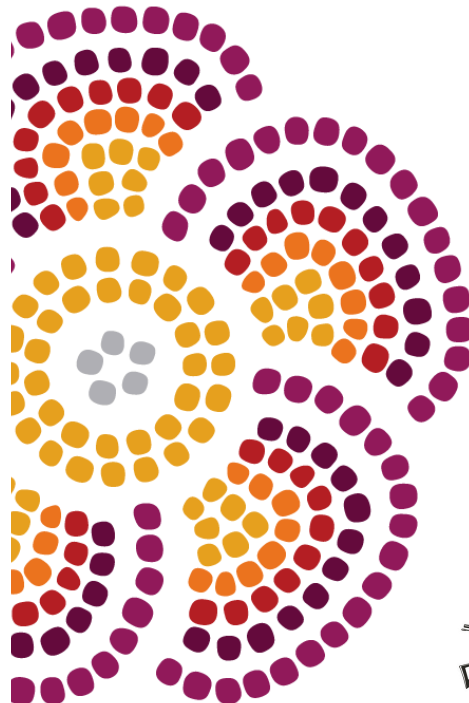
📍 710 - 200 Main Street  
Winnipeg, Manitoba  
R3C 1A8

☎ 204-589-0772

✉ rrmcdc@mmf.mb.ca

🌐 rrmcdc.ca

# Red River Métis Business Association



# Red River Métis Business Association

## Why join?

- **Social Media services** for your business! - Exclusive rates, members only.
- **Bookkeeping services** for your business! - Exclusive rates, members only.
- Member pricing for events and programs - signature events and lunch & learns
- Sponsorship opportunities for members to enhance public profile and share key messages and build brand visibility
- Mentorship & Procurement
- Employee Benefits Program

## Promotes

- **Networking** with other Red River Métis entrepreneurs
- **Programs** that support & enhance your business
- **Events** that feature learning, networking & procurement opportunities, increase your business profile and enhance community engagement
- **Connectivity** and a greater ease of access to other Métis businesses and economic development programs with the MMF and it's affiliates

## Key Activities

- Lead signature events, such as the Red River Métis Business Excellence Awards Gala and the Red River Métis Business Expo
- Facilitate opportunities to network with other Red River Métis entrepreneurs
- Access to discounts on goods and services
- Connecting Red River Métis with corporate sponsorship opportunities and promoting event participation with the MMF and affiliates

**FOLLOW  
US ON  
SOCIAL  
MEDIA TO  
STAY UP  
TO DATE**

SCAN ME

