



**Economic  
Development**



# ECONOMIC DEVELOPMENT NEWS

»»» NEWSLETTER «««



**NEW LIMIT  
INCREASE!**



## RED RIVER MÉTIS PERSONAL LOAN PROGRAM - DELIVERED BY LRCC

The purpose of this interest bearing loan program is to provide financing to Red River Métis Citizens. The loan is intended to be used to purchase consumer goods such as vehicles and home renovations etc. The applicant has to meet several basic requirements, in addition to specific conditions that will be identified as the application progresses. Details and application process can be found on our website at [lrcc.mb.ca](http://lrcc.mb.ca)

### GENERAL ELIGIBILITY



- Red River Métis Citizens who are employed full-time and have successfully completed any applicable employment probationary period;
- Who repay the loans through Pre-Authorized Debit (PAD) program directly from the client bank account.
- Who qualify with a satisfactory credit score, can provide explanations for judgments and/or collections.
- Whose ability to repay the loan is reflected adequately based on an analysis of current income vs debt & personal expenses.
- Who can provide collateral to secure the loan where necessary.

**NEW LIMIT! NOW  
UP TO \$40,000  
PERSONAL LOAN!**

# NEW! RED RIVER MÉTIS BUSINESS DEVELOPMENT CORPORATION

>>> AN INVESTMENT IN YOUR FUTURE!

**New!** Red River Métis Business Development Corporation (Red River Métis BDC), is a proud new Affiliate of the Manitoba Métis Federation, National Government of the Red River Métis. Red River Métis BDC will not only continue to offer equity financing to Red River Métis businesses and entrepreneurs, but will expand its services and supports to businesses in response to their business needs.

Red River Métis BDC, under direction of the Board of Directors, is preparing to launch the **RED RIVER MÉTIS BUSINESS ASSOCIATION**. The association is guided by an Advisory Group, representing Red River Métis businesses and entrepreneurs in both urban and rural communities.

#### The Association will:

- Coordinate and assist with the Annual Red River Métis Business Excellence Awards Gala
- Coordinate and lead the Red River Métis Annual Business Expo
- Deliver events with strong emphasis on member networking, and;
- Promote and highlight results from the Annual Red River Métis Business Survey

**FOLLOW US ON  
SOCIAL MEDIA FOR  
EXCITING  
DEVELOPMENTS**



**VISIT  
RRMBDC.CA TO  
SEE OUR NEW  
WEBSITE!**



# MÉTIS ENTREPRENEURSHIP INITIATIVE

DELIVERED BY LRCC

## >>> SUPPORTING MICRO-BUSINESSES

The *Métis Entrepreneurship Initiative* has three loan programs that support micro-businesses that can be new business start-ups or expansion of an existing business. The loans are up to a maximum of \$25,000 and 25% of the loan is forgivable (to a maximum of \$5,000). There is no personal equity required and interest rates are fixed.

The *Red River Métis Commercial Fishers program* has been expanded to include Trappers. You can also get guidance to expand your business operations or get into the industry for the first time. Call or email to set up an appointment with an LRCC representative at [info@lrcc.mb.ca](mailto:info@lrcc.mb.ca) or call 204-589-0772 and visit our website for more details.

## >>> PARTNERSHIP AND PROCUREMENT OPPORTUNITIES

MMF Economic Development is pleased to offer expert technical procurement advisory services for Red River Métis businesses. These services are designed to empower businesses by helping them access opportunities and secure contracts. If your business is listed on the LRCC business directory and primarily engages in business-to-business interactions, you qualify for 3-5 hours of personalized advisory services.

Support involves a range of activities, such as identifying potential procurement opportunities, responding effectively to tenders and Request for Proposals (RFPs), and understanding the responsibilities that come with securing a contract. This assistance is geared towards maximizing your business's success in procurement process.

For more information and  
to register for this service,  
please email our Senior  
Business Officer,  
Partnership and  
Procurement  
Opportunities, Justine, at  
[justine.backer@mmf.mb.ca](mailto:justine.backer@mmf.mb.ca)





# THE LRCC EQUITY CONTRIBUTION FUND

**>>> UP TO \$99,999 NON-REPAYABLE GRANT!**

At Louis Riel Capital Corp (LRCC) we provide commercial financing to help Red River Métis Citizens start, expand or acquire business in Manitoba. LRCC offers a non-repayable grant up to \$99,999.

The purpose of the non-repayable grant is to increase the amount of cash equity you can put towards your project costs so that you can obtain commercial financing.

## COMMERCIAL LOAN PROGRAM

At Louis Riel Capital Corporation we have a commercial loan program to assist in the financing of the start-up, acquisition or expansion of a business. This program runs alongside the Non-Repayable Grant program, to provide the total financing you need for your business.

### Eligibility requirements:

Under the Equity Contribution Fund, the LRCC may provide a non-repayable grant of generally for the following components:

- ☐ Business must be at minimum 51% Métis owned and controlled (proof of Citizenship required)
- ☐ Clients must have a minimum of 10% cash equity of the total project costs
- ☐ Business must be headquartered in Manitoba
- ☐ Project must create full time employment for Red River Métis Citizens

## >>> MORE DETAILS

LRCC's financial services are extended and delivered on the basis of prudent and sound business principles. Business loans are not designed to assist everyone. Business loans are for projects which are basically sound with reasonable risk factors and can be supported by a business plan. The applicant has to meet several basic requirements, in addition to specific conditions that will be identified as the application progresses.

## FREQUENTLY ASKED QUESTIONS

### When should I apply for the loan?

We strongly recommend applying 6-8 weeks before you expect to carry out your project if possible. This will generally allow for enough time for an application to be adjudicated and approved.

### Are there any Red River Métis ownership requirements?

Yes, all businesses must be majority (51%+) Red River Métis owned in order to qualify for a loan through LRCC.





### **Minimum equity/down payment:**

You are required to have a minimum of 10% of the total amount of your project as cash equity

### **I haven't registered my business yet or opened a bank account, can I still apply for a loan through LRCC?**

Yes, however you will need to register your business and open an account before we can provide an approval so this should be done sooner than later.

### **What sort of rate, amortization, payments, etc. will there be on the loan?**

Every loan is risk scored based on multiple factors including credit history, financial performance, security, market risk, personal net worth, debt serviceability, etc.

### **Will I be required to put down security against the loan?**

LRCC typically requires loans to be secured with assets valued by at least 75% of the amount of the loan.

\* Common types of security are real estate, machinery/equipment, and vehicles.

### **Are there any insurance requirements by LRCC to obtain the loan?**

Yes, all principal owners of the company will be required to obtain life insurance assigned to Louis Riel Capital for at least the amount of the loan.



**Any costs incurred prior to an approval from LRCC are not eligible for the non-repayable grant.**

The business will also be required to assign Louis Riel Capital Corporation to your commercial property & liability insurance policy. This insurance must be provided through a third party provider.

### **Are certain projects ineligible for loans through LRCC?**

\*\* LRCC cannot provide loans towards:

- Non-business related reasons (eg. the purchase of a home, personal vehicles, etc.).
- The purchase of real estate for the purpose of income generation (flipping homes, rental homes, etc.).
- Industries that may be of harm to the Red River Métis Community.

\* A business must have at minimum one Red River Métis owner that is full-time engaged in the business on a day to day basis.

We recommend reaching out to LRCC to discuss your project before applying. Please contact our office directly and speak to our Credit Manager, **Candyea Amos** at [candyea@lrcc.mb.ca](mailto:candyea@lrcc.mb.ca) for more details about your business loan program. We look forward to working with you!

## **A typical project may look like this:**

Total Project = \$100,000,  
Clients Equity 10% = \$10,000  
LRCC Grant 30% = \$30,000  
LRCC Loan 60% = \$60,000

# MÉTIS WOMEN ENTREPRENEURSHIP (MWE) PROGRAM

➤➤➤ **A HOLISTIC PROGRAM UNIQUELY TAILORED TO SUPPORT AND EMPOWER MÉTIS WOMEN ENTREPRENEURS THROUGH THEIR ENTREPRENEURIAL JOURNEY**

## MWE Grant & Loan Program

LRCC provides commercial financing to help Red River Métis women start or expand businesses in Manitoba. This program offers commercial financing composed of a grant and loan.

## MWE Grant & Mentorship Program

Benefit from the guidance and expertise of experienced mentors and industry professionals who are dedicated to helping you achieve your goals. Mentorships take place over a 6-month period with the mentor and mentee each receiving a small grant to put towards eligible business expenses.

## MWE Workshops & Networking Events

Gain valuable insights and connections through our program's diverse array of workshops. Join the LRCC social media accounts for announcements on upcoming events.

**For more information on the MWE program, please contact our office at (204) 589-0772 ext 2225 or email [info@lrcc.mb.ca](mailto:info@lrcc.mb.ca)**

**VISIT [WWW.LRCC.MB.CA/METIS-WOMEN-ENTREPRENEURSHIP-PROGRAM](http://WWW.LRCC.MB.CA/METIS-WOMEN-ENTREPRENEURSHIP-PROGRAM)**

## MANITOBA MÉTIS BUSINESS DIRECTORY

**HELPING  
MÉTIS  
BUSINESS  
SUCCEED!**



**Connecting & promoting  
your business in Manitoba**

**VISIT [ONLINE-DIRECTORY.LRCC.MB.CA](http://ONLINE-DIRECTORY.LRCC.MB.CA)  
FOR MORE INFORMATION AND TO REGISTER YOUR  
BUSINESS TODAY!**

## RED RIVER MÉTIS WORDSEARCH

C Z F E U T X I R T H V F X I S Y G H Y  
S Z H R X C T T I N W S T A T M A G V Z  
U B L A E O T H E B N O A B Y Q V G B Z  
A R O H R D L W L I E F D S E D I K K I  
N Y C E N V R V B S K I H Y H A O S R G  
C Q A R J M E I Q O A D T H Z Y D P I T  
E J L I O I H S V N A D H T M J R I I X  
S A S T I C N R T E O L G W W A Q W N Y  
T N H A C H K W M I R E B A N N O C K G  
R C G G U I Y K E C N Y I Z S F C H F L  
Y E A E L F I L S G I G R N R R C A V I  
O S N J T V W N C C D T V Q F V D I R X  
O T J P U S P W E S A S I Z K I M L N T  
K R L L R Q B M U A S D P Z Y N N J I M  
N Y Y W E N A L D U P D T R E N W I I K  
N S F I A L B B M É T I S G O N E C T G  
P B W K U B P Q C P N M W L E Q S I O Y  
Y Q T M T R A D I T I O N A L F O H K F  
D F J Q C Q Q A T B Z O L V L C A M I T  
T B K P V W V B A T O C H E T L W Z H P

Citizenship	Traditional	Harvesting	Sash
Heritage	Ancestry	Red River	Cart
Infinity	Bannock	Ancestry	Jig
Beading	Culture	Batoche	Riel
Locals	Michif	Métis	
Fiddle	Bison		



# RED RIVER MÉTIS ECONOMIC AND COMMUNITY DEVELOPMENT

**>>> MECD OFFICERS ARE IN THE REGIONS READY TO HELP!**

The Métis Economic & Community Development team is responsible for implementing Red River Métis distinct economic and community development initiatives. The Métis Economic and Community Development (MECD) team is made up of nine officers – one located in each Region, one within the Infinity Women Secretariat and one specific to Beyond Borders. MECD is dedicated to supporting Red River Métis businessowners and entrepreneurs to advance Red River Métis presence, participation, and success in various economic sectors. MECD offers support to Red River Métis business owners and entrepreneurs via networking opportunities, promotion, and assistance in navigating the complexities of business planning and funding applications.

Each of the MECD Officers are designated as a Sector Lead, responsible for creating a sector-specific strategy that will be utilized to guide the directives of the Sector. The strategy identifies the opportunities and needs that lie within the Red River Métis community, and ways to support Red River Métis businesses in establishing, maintaining, or expanding their operation. MECD Officers will serve as a point of contact for community partners seeking to connect with the Manitoba Métis Federation and Red River Métis Citizens for economic & community development initiatives and projects. Officers are active in the community through building, fostering, and maintaining relationships with Red River Métis Citizens and entrepreneurs, further strengthening the ability to collaborate or support their activities.

**FIND YOUR LOCAL  
MECD OFFICER  
HERE! >>>**

## CONTACT INFORMATION FOR MECD OFFICERS:

**Jolanda Kroll:** Southwest Region, Agriculture Economic Sector lead, Ph: 204-914-0944 Email: [jolanda.kroll@mmf.mb.ca](mailto:jolanda.kroll@mmf.mb.ca)

**Tammy Chief:** Northwest Region, Forestry Economic Sector lead, Ph: 204-638-9485 Email: [tammy.chief@mmf.mb.ca](mailto:tammy.chief@mmf.mb.ca)

**Donna Austfjord:** Interlake Region, Fisheries Economic Sector lead, Ph: 431-275-5103 Email: [donna.austfjord@mmf.mb.ca](mailto:donna.austfjord@mmf.mb.ca)

**Dean Mason:** Winnipeg Region, Aerospace and Defense, Manufacturing Economic Sector lead, Ph: 431-293-9158 Email: [dean.mason@mmf.mb.ca](mailto:dean.mason@mmf.mb.ca)

**Jessica Boucher-Cowie:** Beyond Borders, Creative Industries and Technology Economic Sector lead, Ph: 431-338-1801 Email: [jessica.boucher-cowie@mmf.mb.ca](mailto:jessica.boucher-cowie@mmf.mb.ca)

**Samantha Law:** Southeast Region, Tourism and Hospitality Economic Sector lead, Ph: 204-754-2721 Email: [samantha.law@mmf.mb.ca](mailto:samantha.law@mmf.mb.ca)

**Hannah Lahonen:** The Pas Region, Mining Economic Sector lead, Ph: 204-923-0331 Email: [hannah.lahonen@mmf.mb.ca](mailto:hannah.lahonen@mmf.mb.ca)

**Jocelyne Fournier:** Infinity Women Secretariat, Business Navigator, Email: [jocelyne.fournier@mmf.mb.ca](mailto:jocelyne.fournier@mmf.mb.ca)





MMF

# FIRST TIME HOME PURCHASE PROGRAM

DELIVERED BY LRCC ON BEHALF OF THE MMF HOUSING DEPARTMENT

## >>> THE PROGRAM

Launched in February 2019, the MMF's First Time Home Purchase Program (FTHPP) addresses the housing needs, priorities and challenges of Red River Métis and makes home ownership a reality for Red River Métis Citizens who have never owned a home before. It provides funding for down payments on the purchase of a home to a maximum of 5% of the purchase price up to \$18,000.00 plus purchase closing costs of 1.5% of the purchase price up to a cap of \$2,500.00

## >>> THE RESULTS

To date, 1,559 applications have been received, with 1,372 being approved. Of this, 974 of the applications have been funded and \$13,333,997 has been disbursed. The number of people in homes purchased under FTHPP is 2030 including 557 children. Of the 974 Citizens funded to date, 520 are female and 454 are male. The total value of homes purchased under FTHPP is \$224,648,584. Total mortgages leveraged amount to \$224,648,584. The program has also generated other economic impacts of \$51,807,060 and has created 453 jobs. FTHPP is considered a leading practice in promoting home ownership and is the model for similar programs being established across the country.

**There are currently  
13 applications set  
to fund to help  
start the new fiscal  
year, totaling an  
additional \$192,544  
of funding!!!**

## >>> FISCAL 23/24

Our fiscal year began April 1st, 2023 and ended March 31st, 2024, 288 applications have been received with 245 being approved. Of this, 189 applications have been funded and \$2,717,394 has been disbursed. The number of people in homes purchased under FTHPP is 390 including 101 children. Of the 189 Citizens funded, 97 are female and 92 are male. The total value of homes purchased under FTHPP is \$46,604,276. Total mortgages leveraged amount to \$44,274,062. The program has also generated other economic impacts of \$10,052,910 and has created 88 jobs.



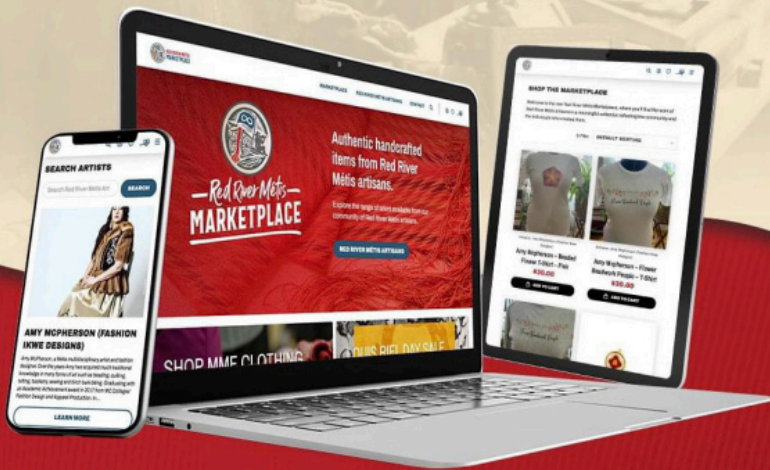
# RED RIVER MÉTIS MARKETPLACE

➤➤➤ AUTHENTIC HANDCRAFTED ITEMS FROM RED RIVER MÉTIS ARTISANS



—Red River Métis—  
**MARKETPLACE**

*Has launched a new online shop!*



Red River Métis Marketplace sells authentic handcrafted items from Red River Métis artisans.

**REDRIVERMETISMARKETPLACE.CA**



—Red River Métis—  
**MARKETPLACE**

**Authentic handcrafted items from Red River Métis artisans.**

Explore the range of talent available from our community of Red River Métis artisans.

**ARE YOU A RED RIVER MÉTIS ARTIST?**

**Contact Us today to start selling your work.**

We are showcasing the unique and incredible talents of our Red River Métis artists, artisans, makers and designers. We give you their stories of how they came to be and why they have taken this journey. Perhaps we will inspire your very own talents as well! We can't wait for you to introduce yourself to us!



Red River Métis Marketplace is the retail division of ESGS Inc., a proud affiliate company of the Manitoba Métis Federation, the National Government of the Red River Métis.

150 Henry Avenue Winnipeg, MB R3B 0J7  
(204) 942-7535 Ext 2170

[www.redrivermetismarketplace.ca](http://www.redrivermetismarketplace.ca)





# **NEW! RED RIVER MÉTIS TREE NURSERY INC.**

**>>> LOCATED IN THE R.M OF ST. ANDREWS, MANITOBA!**

MMF Economic Development Inc. is excited to contribute to the establishment of the new Red River Métis Tree Nursery Inc, located in the R.M of St. Andrews. The nursery will produce for a variety of markets, including trees and shrubs for various MMF planting programs, as well as offering cultural and economic opportunities to Red River Métis Citizens and the surrounding communities.

The MMF remains committed to Red River Métis involvement in its initiatives, and as development of the nursery progresses, we are seeking suppliers across the supply chain to provide essential goods and services, from seeding to shipping stages. For more information on how your business can get involved in this exciting opportunity, please contact Danielle Vermette, Business and Financial Analyst, at [danielle.vermette@mmf.mb.ca](mailto:danielle.vermette@mmf.mb.ca).

## **NEW! LAKE MANITOBA RESORT**

**>>> A PLACE TO PLAY, TO STAY, AND TO RECONNECT WITH FAMILY AND FRIENDS**

**NEW!** Lake Manitoba Resort is preparing for an exhilarating golfing season with its immaculate 9-hole course, ensuring a memorable experience for golf enthusiasts of all levels. The course is meticulously maintained, promising enjoyable rounds amidst scenic surroundings. Guests can anticipate a fully stocked pro shop catering to all golfing needs, from essential equipment to fashionable attire. Additionally, the resort's clubhouse, a central hub for social gatherings, is now open, offering a welcoming retreat for relaxation and camaraderie after a satisfying day on the greens.

As Lake Manitoba Resort continues to enhance its offerings, the eagerly awaited clubhouse will soon become a favourite spot for visitors seeking post-game leisure and socializing. With its inviting ambiance and attentive service, the clubhouse promises to elevate the overall experience at this premier golf destination. Stay updated on all developments and plan your visit by exploring our website at [lakembresort.com](http://lakembresort.com) or follow us on Facebook at @MMF Lake Manitoba Resort. Get ready to enjoy an unforgettable golfing getaway at Lake Manitoba Resort, where every detail is designed to ensure your enjoyment.

**LAKE MANITOBA RESORT IS AN INITIATIVE DRIVEN BY THE MANITOBA MÉTIS FEDERATION TO CREATE A FAMILY-FRIENDLY RV PARK, GOLF COURSE, AND COUNTRY CLUB JUST OUTSIDE OF ST. LAURENT, MANITOBA.**

**BOOK YOUR TEE TIME BY CALLING OUR PRO SHOP AT 204-646-2100**

Course opens  
May 10th!  
Clubhouse  
opens May 17th!

**Lake  
Manitoba  
RESORT**



# JOIN OUR SOCIAL MEDIA ACCOUNTS!

**>>> TO KEEP UP TO DATE ON ECONOMIC DEVELOPMENT NEWS AND EVENTS**

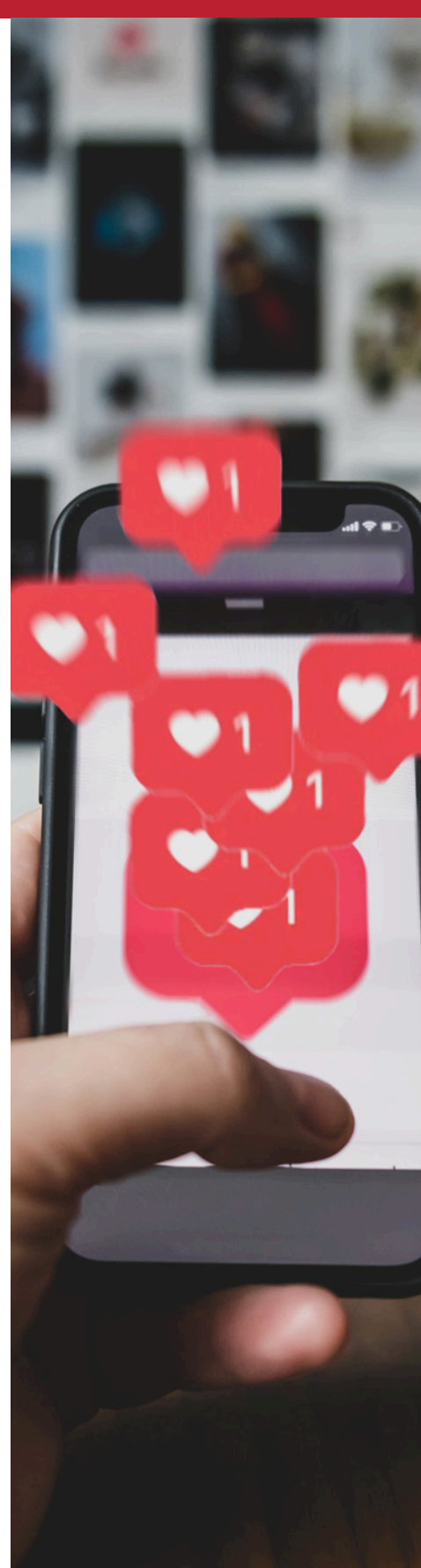
**FOLLOW  
RRMBDC ON  
SOCIAL MEDIA**



**FOLLOW LRCC  
ON SOCIAL  
MEDIA**



**FOLLOW LAKE  
MB RESORT ON  
SOCIAL MEDIA**







## **MMF ECONOMIC DEVELOPMENT PORTFOLIO**

The Economic Development programs & services offered to Red River Métis Citizens are made possible through the economic development initiatives under the leadership of President Chartrand as Minister of Economic Development of the Manitoba Métis Federation.